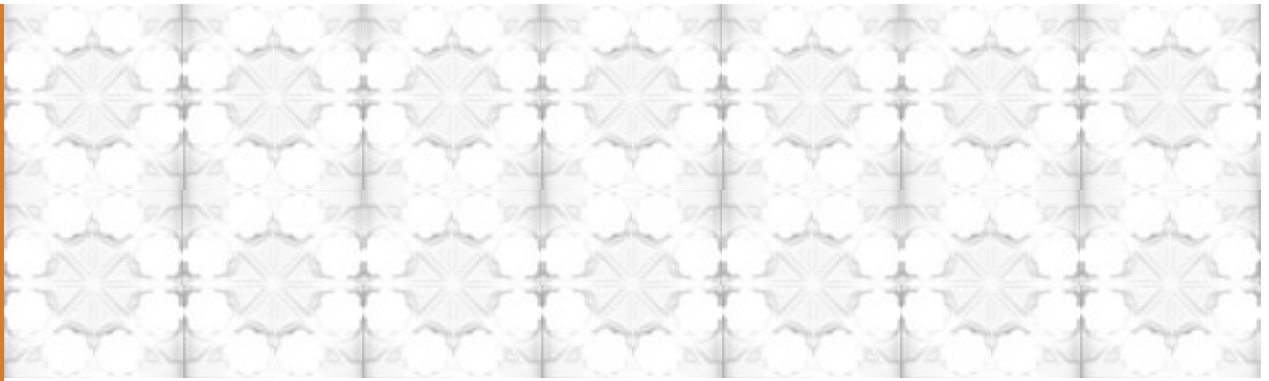


S20



CREATHERM™

**RADIANT
FLOOR
PANELS**

BENEFITS OF RADIANT FLOOR PANELS

- + EASE of use
- + ENERGY savings
- + ENVIRONMENTALLY friendly
- + FASTER construction
- + FEW design limitations
- + LOWER labor cost

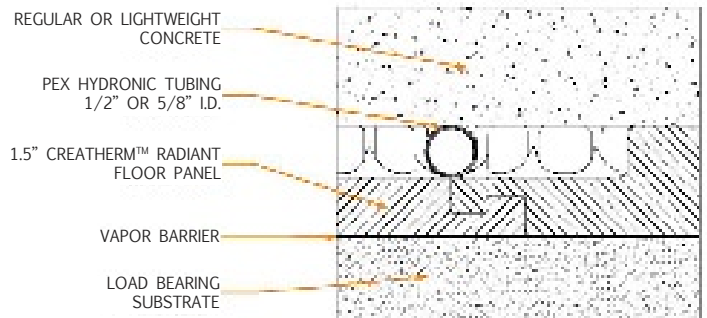
Building with expanded polystyrene foam allows you to be innovative. Foam is incredibly strong, quiet, energy efficient, resistant to insects and mold, and virtually allergen free.

The finished floor panel size is approximately 2' x 4' and features 8 radial snap grids for optimal spacing of tubing. Snap Tight grid holds radiant tubing in place. On-center points exist every 6 inches. Run tubing at 45 degree angles with ease.

Create your own imprint. Ask about customizing our Creatherm™ Radiant Floor Panels to achieve exclusivity in your market.

THESE PANELS OFFER A GREAT SOLUTION FOR SLAB-ON-GRADE, SNOW MELT, RETRO-FIT & ROOT ZONE HEATING!

Creatherm™ is manufactured according to the proprietary process protected by U.S. Design Patent No. D541396 and is a registered trademark licensed to the Creatherm Company.



Proud member of:



WWW.CREATHERM.COM
info@creatherm.com



CREATHERM™ is a lightweight, closed-cell plastic resin. It is processed in our plants and injected into a custom-built mold where steam is introduced, causing CREATHERM™ to hold its shape.

	ASTM TEST	UNITS	STANDARD S 20	STANDARD S 45
TEST DATA				
Thermal Resistance R-Value	C-177 or C-518	F.ft2.h/Btu	5	9
Thermal Conductivity K-Value		Btu.in/h.ft2 F	0.229	0.329
Density	C-303	lb/ft3	2.0 PCF (32 gpl)	2.0 PCF (32 gpl)
Compressive Resistance at 10% Deformation	D-1621	PSI	32	36
Water Vapor Permeability	E-96	Perm-Inches, Max.	2	2
Water Absorption	C-272	% by Volume Max.	4	4
Dimensional Stability	D-2126	% Max	2	2
Mold Resistance	C-1338	5 Strains	No Growth	No Growth
PRODUCTION				
Board Size		Inches	24.625" x 48"	25" x 49"
Usable Area		Inches	23.5" x 47"	24" x 48"
Recommended PEX		Inches	1/2" & 5/8" I.D.	1/2", 5/8", & 3/4" I.D.
Total Thickness Including Pipe Grid		Inches	1.5"	2.8"
Nominal (EPS) Insulation Thickness		Inches	.75"	2"
Screed Volume in Tube Grid		Cubic Inches	582	875
Cover Stock			Polystyrene	Polystyrene
Standard Color			White	Orange
Other Colors			Available On Request	Available On Request
SHIPPING				
Parts/Bundle			25	10
Sq. Ft./ Bundle			191.75	80

**Data contained herein is meant for reference and estimating purposes only. Refer to appropriate ASTM standards or call for more detailed information. CREATHERM™ Radiant Floor Panels can be customized to your specifications. Inquire for custom quotes.

+ Attach Sales Rep Contact Info Here...

